



John C. Wasson (1842-1885)

John Wasson was the first of eight children born to John and Jemima Wasson.

John and Jemima Wasson's son John, Jr. was born on May 16, 1842 on the Atlantic Ocean as his parents were emigrating to the United States from Scotland. After his family reached the Grosse Île Quarantine Station in Québec, he was baptized on June 19th through the Anglican Church in Rivière-du-Loup, Québec, the parish of which at the time included the quarantine station.

His family settled in Amboy Township, Oswego County, New York where John, Sr.'s parents and brother lived. He moved to Jackson County, Iowa with his family in 1854, and then to Jones County, Iowa by 1860.



John Wasson, Jr. in 1868

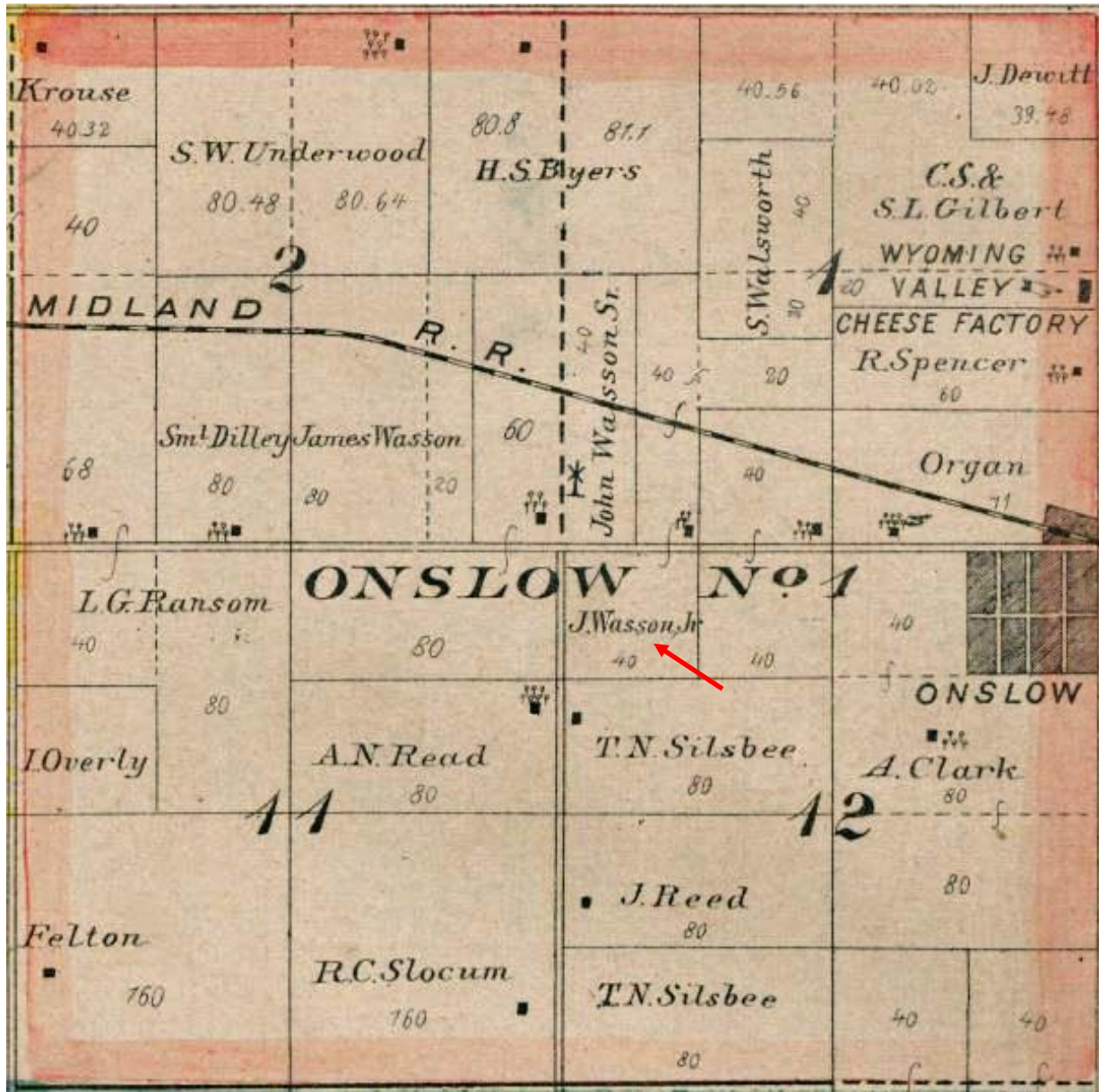
Like the rest of his family, John, Jr. united with the Scotch Grove Presbyterian Church when the family moved to the area in 1854. In 1873, he united with the Onslow Presbyterian Church.

John was the only one of John and Jemima's sons to be old enough to serve in the Civil War. His registration for the draft was recorded in 1863 shortly after his 21st birthday, but I found no evidence that he actually served in the war.

John married Sarah A. Himebaugh on September 26, 1874 at her parents' home, two farms to the east of his parents' farm. Sarah was born in Jones County to C.C. Himebaugh and his wife

Clarissa. The Himebaughs may have been part of a wave of settlers from western Pennsylvania that arrived in Jones County in the early 1850s.

At some point before 1877, John bought what was once the Dockstader farm between his parents' farm to the west and the Himebaugh farm to the east. He later acquired portions of the Himebaugh farm – the land between the railroad and the north 20 acres of the E ½ of the SW ¼ of section 1 and the NE ¼ of the NW ¼ of section 12 – when they sold out, giving him more than 140 acres total. He lived on this farm for the rest of his life.



This 1877 plat map shows John Wasson, Jr.'s farm, which at the time consisted of 100 acres in sections 1 and 12 of Madison Township. John Jr. later acquired additional land in sections 1 and 12. Some of his farm was sold off when settling his estate.



View of the former John Wasson Jr. Farm from 80th Avenue, Madison Township. Some years after John Jr. died, his brother Joe bought this farm and rented it out.

John, Jr. and Sarah had five children who lived to adulthood. In both the 1900 and the 1910 U.S. Census records, Sarah indicated that she had given birth six times but only five children survived. The name, birth and death dates, and burial location of the sixth child are not known.

Their five known children included the following:

- Albert C. Wasson, born January 11, 1876, in Madison Township, Jones County, Iowa
- Bertha Mae Wasson, born April 10, 1878, in Madison Township, Jones County, Iowa
- Arthur Garfield Wasson, born March 31, 1880, in Madison Township, Jones County, Iowa
- John David Wasson, born August 15, 1881, in Madison Township, Jones County, Iowa
- Sarah “Sadie” Elizabeth Wasson, born September 6, 1884, in Madison Township, Jones County, Iowa

In early May 1885, John, Jr. became very ill with typho-malaria, an illness that had also sickened four of his children. In spite of frequent visits from the doctor, running up more than \$30 in medical bills, John, Jr. died on May 26. He was buried in Wyoming Cemetery, Wyoming, Iowa.

At his residence near Onslow, May 26, 1885, Mr. JOHN WASSON, JR., aged 43 years and 20 days.

The deceased was the eldest child of Mr. John Wasson, Sr., and was born on the Atlantic ocean. He came to this community when 17 years old and his home has been here ever since. He also found a spiritual home in the year 1873 in the then young Presbyterian church of Onslow. The typho-malaria prevalent in this vicinity entered his home and attacked four of his children, the eldest very seriously. For several days his life was despaired of and before he was fully out of danger, the father was stricken down. Nothing serious was anticipated for a few days, but the disease soon showed its power over his already worn-out strength, through care for his children. Slowly but surely it was doing its work, and on the afternoon of the 26th he sweetly breathed his last. The afflicted ones have the deep sympathy of the whole community. Funeral services were held in the Presbyterian church of Onslow from whence his remains were carried to their resting place in Wyoming cemetery. The discourse was preached by the pastor from John II. 25, and was assisted in the services by Rev. J. L. Wilson, of Center Junction, an acquaintance and friend of the family for many years. - H. C.

News of the death of John Wasson, Jr., Anamosa Eureka, June 4, 1885



Markers for John C. Wasson, Wyoming Cemetery

John, Jr. had joined the Iowa Legion of Honor less than a year before he died. Through that membership his wife received \$2000 in insurance in August 1885, a fair amount of money in those days.

John, Jr. did not have a will. The settling of his estate was administered by a R.W. McCready. It was common that people shopped on credit with local stores and traded farm goods, livestock and services on credit with their neighbors, so John, Jr.'s estate was owed a number of small sums of money, but it also had several small debts.

In his final months, for example, John and Sarah had purchased a number of items on credit at local stores and from service providers, who then made small claims against John, Jr.'s estate. Items included furniture, crackers, coffee, cigars, cinnamon, raisins, lemon extract, tobacco, lemons, oranges, candy, licorice, telephone use, telephone messages, canned herring, flannel, tea, horse blankets, kerosine, calico, a jacket, sugar, safety pins, overalls, a comb, a handkerchief, children's boots, muslin, edging, thread, shoes, a shawl, needles, a crochet hook, buttons, baking powder, vinegar, starch, ginger, cloves, matches, rice, oysters, writing paper, a wash basin, a bird cage, staples, nails, a bucket, wire, rope, and \$10 for the services of a stallion. There wasn't anything unusual about any of this, but it provides a glimpse into everyday life for John, Jr. and his family in 1885.

The debts were sufficiently large that the administrator recommended selling 22 cows, 3 horses, 3 colts, 7 yearling cattle, 16 calves, 1 bull, 31 hogs, 59 pigs, 2 wagons, a corn plow, a breaking plow, a drag, a feed kettle and a set of scales, as well as 10 acres of oats crop, 7 acres of barley crop, 40 acres of corn crop, and 22 acres of meadow (grass and hay). The sale raised over \$2300.

One hundred acres of his farm were also sold off.

Several items had been set aside for the widow and her family, mostly furniture, other household items, family photos, sewing goods, food on hand, some farm animals and some farm implements.

In September 1885, Sarah and her children moved into Onslow after she bought her brother's house there. She rented out what was left of her farm to Henry Welch. In 1888, she sold her town property to W.H. Reade and moved into the Marecheck house. She also rented out the farm to a new tenant.

Later that year, Sarah visited her sister in O'Brien County, Iowa. Not long after she returned, she sold her farm to Henry Welch, and then bought a property in O'Brien County. Sarah and her children moved to O'Brien County in March 1889.

By September 1894, Sarah had met and married Edmond Hughes, a school teacher in O'Brien County. They moved to Martin County, Minnesota, and then to Winona, Washington, before ending up in Potlatch, Idaho, a lumber mill company town at the time. Sarah died on August 27, 1927 in Potlatch, and was buried in Potlatch Cemetery.



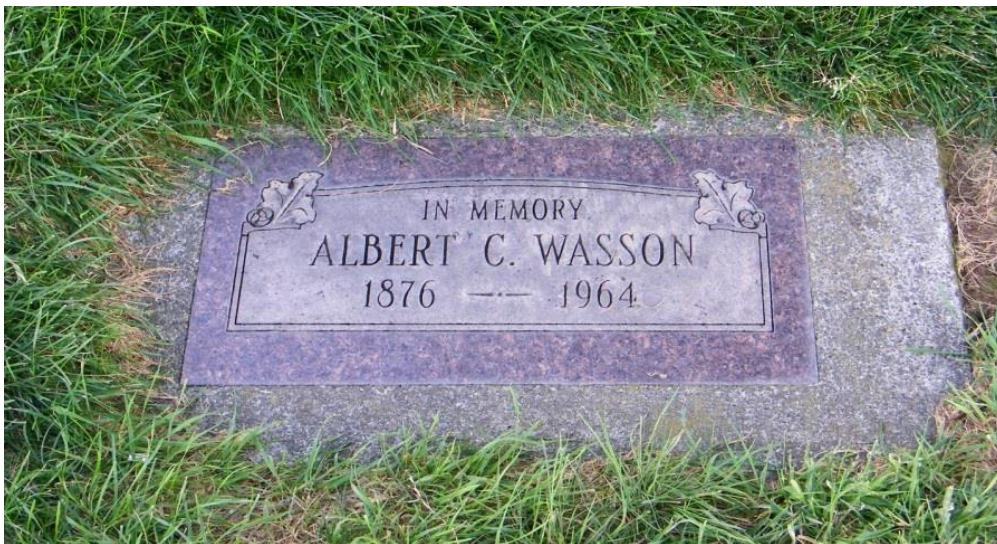
Marker for Sarah Himebaugh Wasson Hughes in the Hughes family plot, Potlatch Cemetery, Potlatch Idaho. Her husband remarried after she died and was buried elsewhere.



Sarah Himebaugh Wasson Hughes

Albert C. Wasson (John and Sarah Wasson's son)

Son Albert C. Wasson married and headed west where he worked in forestry. He and his wife Ida had no children. He died February 21, 1954. Albert and Ida were buried in Vineland Cemetery, Clarkston, Washington, not far from Potlatch.



Marker for Albert C. Wasson, Vineland Cemetery, Clarkston, Washington

Bertha Mae Wasson (John and Sarah Wasson's daughter)

Daughter Bertha Mae Wasson married three times. She had one son with her first husband, but the son apparently never married and had no children of his own. She died in Las Vegas, Nevada in 1958, and was buried near her mother in Potlatch Cemetery.



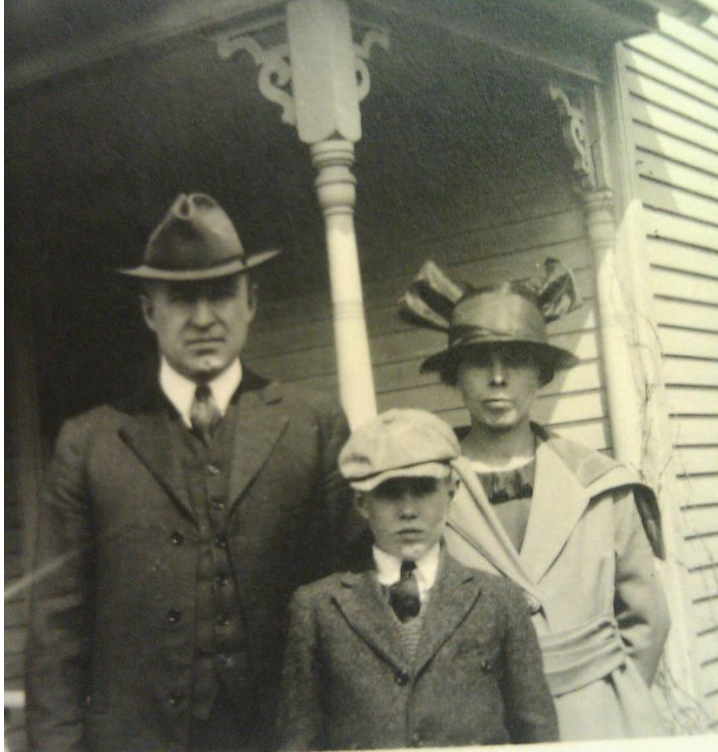
Marker for Bertha Mae Wasson Schindler, Potlatch Cemetery, Potlatch, Idaho

Arthur Garfield Wasson (John and Sarah Wasson's son)

Son Arthur Garfield Wasson married Nellie Bradshaw. They had a son Chester who had three children with his first wife and two more children with his second wife. He had a number of grandchildren. Arthur died May 18, 1959, in Paonia, Colorado.



Arthur Garfield Wasson



Arthur Garfield Wasson, his wife Nellie and their son Chester



Chester Wasson, his wife Genette, and their three children.



Marker for Arthur Wasson, Cedar Hill Cemetery, Paonia, Colorado

John David Wasson (John and Sarah Wasson's son)

Son John David Wasson married widow Glennie Nicodemus Click in 1923. They had no biological children together, but she had a daughter from her first marriage. For a number of years, John worked in sales in the Des Moines area. He and Glennie eventually moved to San Francisco, where he lived the rest of his life in the city's Tenderloin neighborhood. John died Nov. 26, 1955, the last of six successive generations of John Watsons/Wassons. The remains of John, Glennie and Glennie's daughter Lucille share a niche at Cypress Lawn Memorial Park in Colma, California.



John and Glennie Wasson lived in these two San Francisco buildings



Sarah Himebaugh Wasson Hughes and son John David Wasson



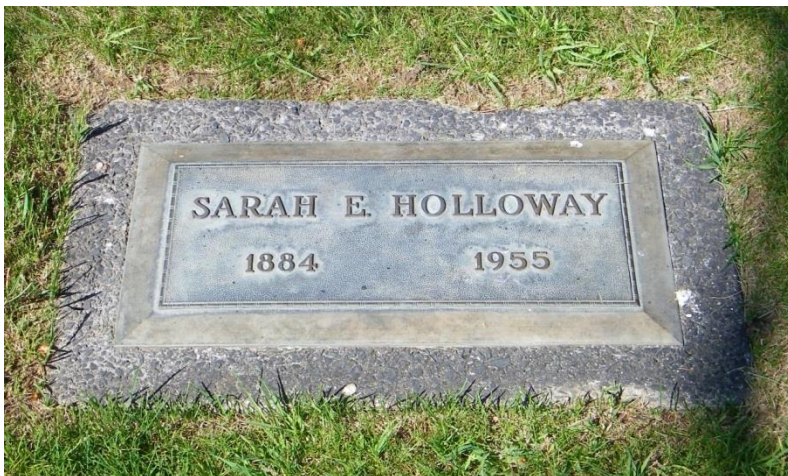
Niche for the cremains of John David Wasson, his wife Glenna and her daughter Lucille, Cypress Lawn Memorial Park, Colma, California

Sarah Elizabeth “Sadie” Wasson (John and Sarah Wasson’s daughter)

Daughter Sarah Elizabeth “Sadie” Wasson married Oscar Holloway in Minnesota. Oscar worked in the lumber industry. They eventually moved to Spokane, Washington and then to Klamath Falls, Oregon. Sarah and Oscar had two children, only one of which is known to have had children, a stepdaughter. Sarah died in Klamath Falls on June 11, 1955. Sarah and Oscar were buried in Klamath Memorial Park, Klamath Falls.



Sarah Wasson Holloway



Marker for Sarah Wasson Holloway, Klamath Memorial Park, Klamath Falls, Oregon

Prepared by Mark David Wasson
Last updated October 31, 2021